

SCOTTSDALE AIRPARK SUBMARKET

2ND FLOOR CREATIVE OFFICE SPACE FOR SUBLEASE

15001 N HAYDEN ROAD | 203/204 | SCOTTSDALE, AZ 85260

±3,754 SF

SUBLEASE ENDS
12/31/2028

EXCLUSIVELY OFFERED BY



Randy Shell
Designated Broker
C 480.694.4100
randy@shellcommercial.com



Amanda Wright
Senior Associate
C 480.236.0037
amanda@shellcommercial.com



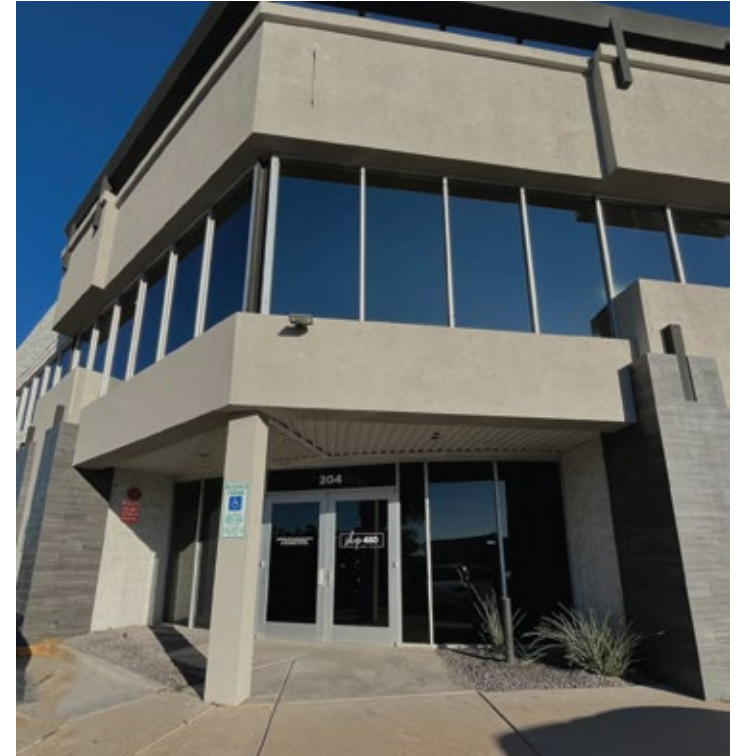
O 480 443 3992
www.shellcommercial.com
16410 N 91st Street | Suite 112
Scottsdale, AZ 85260

The above is subject to prior sales and leasing. This information has been secured from sources we believe to be reliable, but we make no representation or warranties, expressed or implied as to the accuracy of this information.

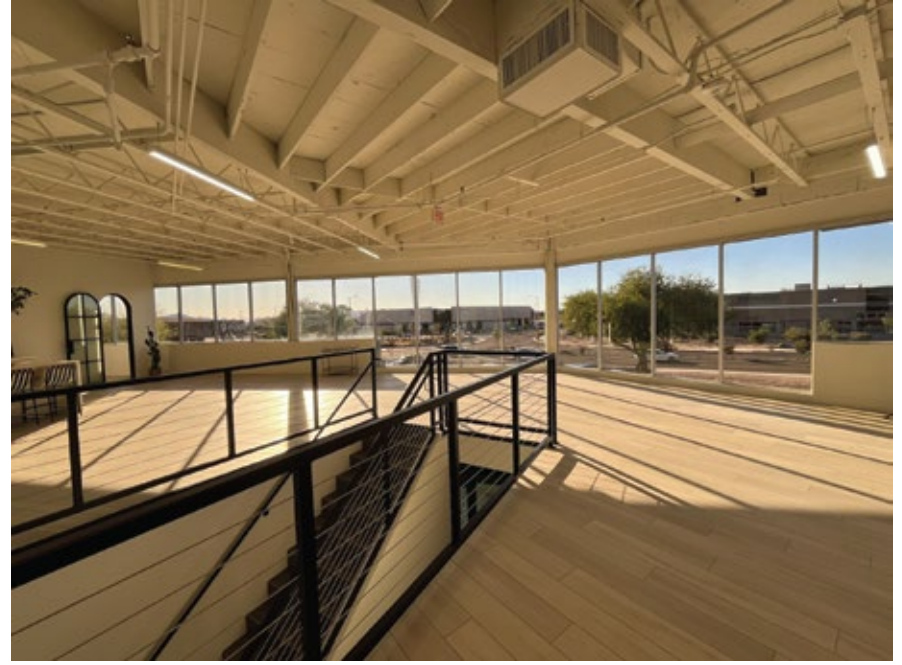
15001 N HAYDEN ROAD • SCOTTSDALE, AZ 85260

EXPANSIVE WINDOWS WITH SWEEPING VIEWS | SPACIOUS OPEN FLOOR PLAN

- SIZE:** • ±3,754 sf 2nd floor office suite with 1st floor main lobby access; separate private employee entrance also available
- SUBLEASE EXP.:** • 12/31/2028
- FEATURES:**
- Modern open floor plan with 2 distinct work areas separated by a beautiful custom door. Ideal creative work space!
 - Lobby features a nice seating area and separate storage area
 - Large kitchen including island and quartz countertops
 - Kitchen features ice maker, built in microwave, beverage/fridge drawer and R/O system
 - Two updated restrooms
 - Electric shades in “office” area of space
 - Light and bright with amazing window views!
 - Furnishings available
 - Prime location on major intersection (Hayden/Raintree) with great Hayen Road visibility
 - One (1) mile from Loop 101 freeway access
- PARKING RATIO:** • 2.45/1000sf
- ZONING:** • C-3 (Commercial), City of Scottsdale

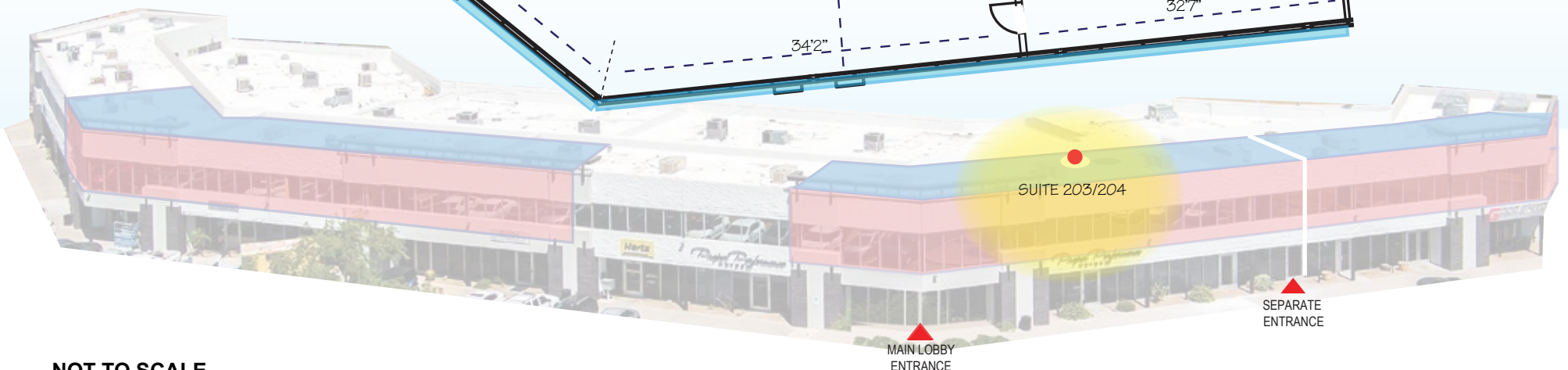
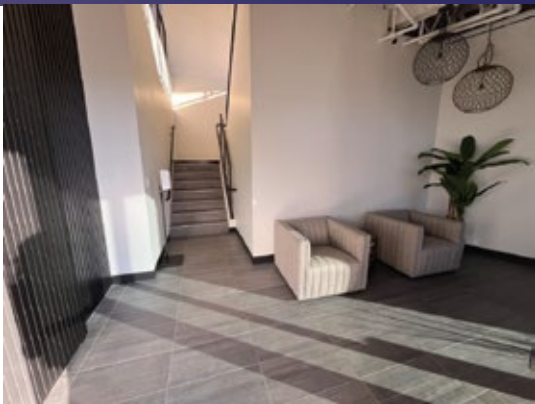
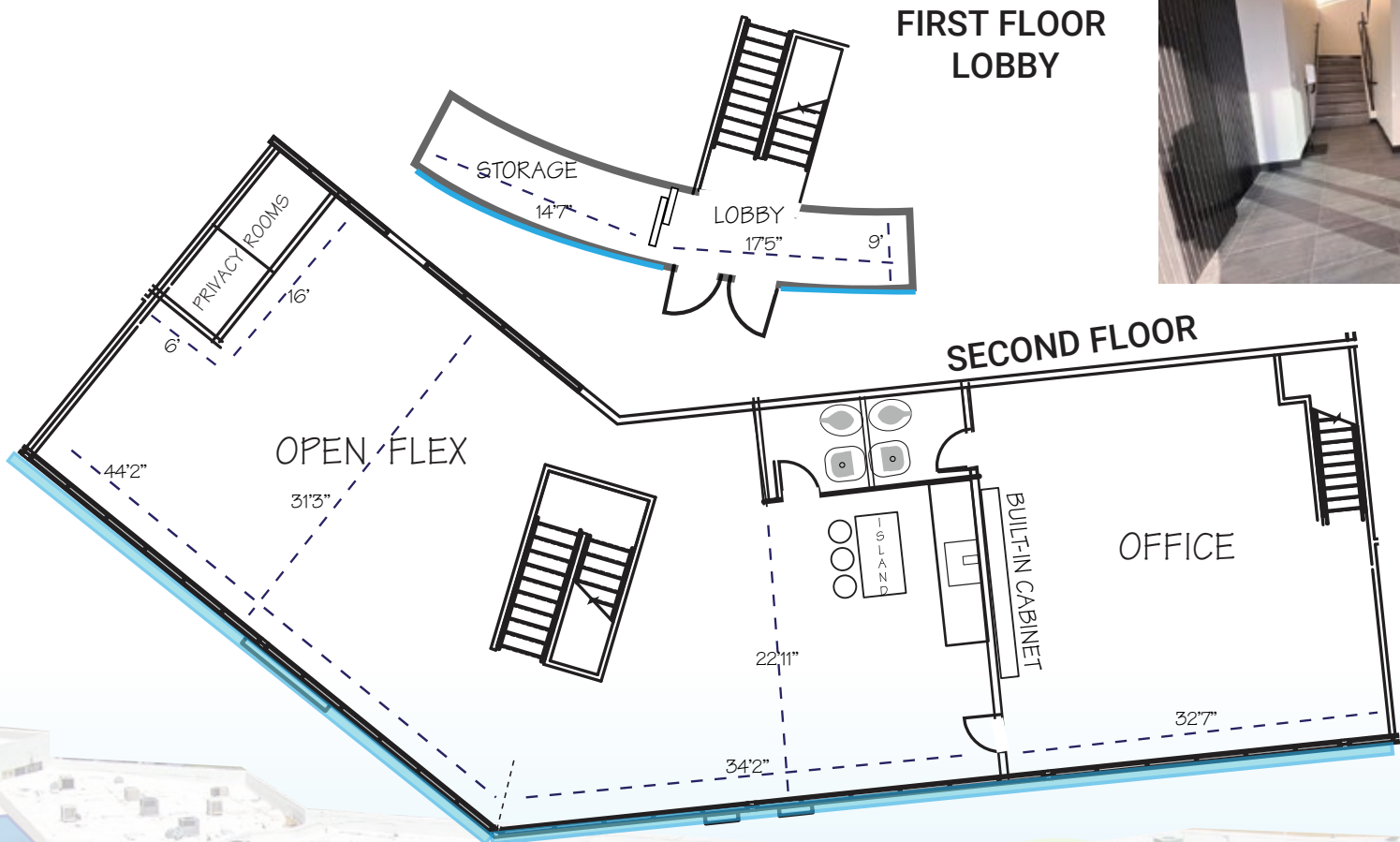


15001 N HAYDEN ROAD • SCOTTSDALE, AZ 85260



15001 N HAYDEN ROAD • SCOTTSDALE, AZ 85260

SUITES 203-204 ±3,754 sf



NOT TO SCALE

All information furnished regarding property for sale, rental or financing is from sources deemed reliable, but no warranty or representation is made to the accuracy thereof and same is submitted to errors, omissions, change of price, rental or other conditions, prior to sale, lease or financing or withdrawal without notice. No liability of any kind is to be imposed on the broker herein. This information has been secured from sources deemed reliable, however, we make no warranties as to its accuracy.

15001 N HAYDEN ROAD • SCOTTSDALE, AZ 85260



The above is subject to prior sales and leasing. This information has been secured from sources we believe to be reliable, but we make no representation or warranties, expressed or implied as to the accuracy of this information.